



Propane Fuel Sensor
SN110
User Manual

Revised January 28, 2021

Contact

Please do not hesitate to contact Altrac with any questions.

Phone: (510) 248 - 4141





Email: support@altrac.io


Website: altrac.io

Table of Contents

Identifying Current Dial	4
Altrac Propane Fuel Sensor	6
Propane Sensor Specifications	7
Operating Temperature	7
Accuracy	7
Choosing a Remote Ready Dial	8
Removing Existing Dial	10
Remote Ready Dial Installation	11
Tabbed Dial Replacement	11
Drop - In Dial Replacement	12
Press - In Dial Replacement	13
Propane Sensor Installation	14

Identifying Current Dial

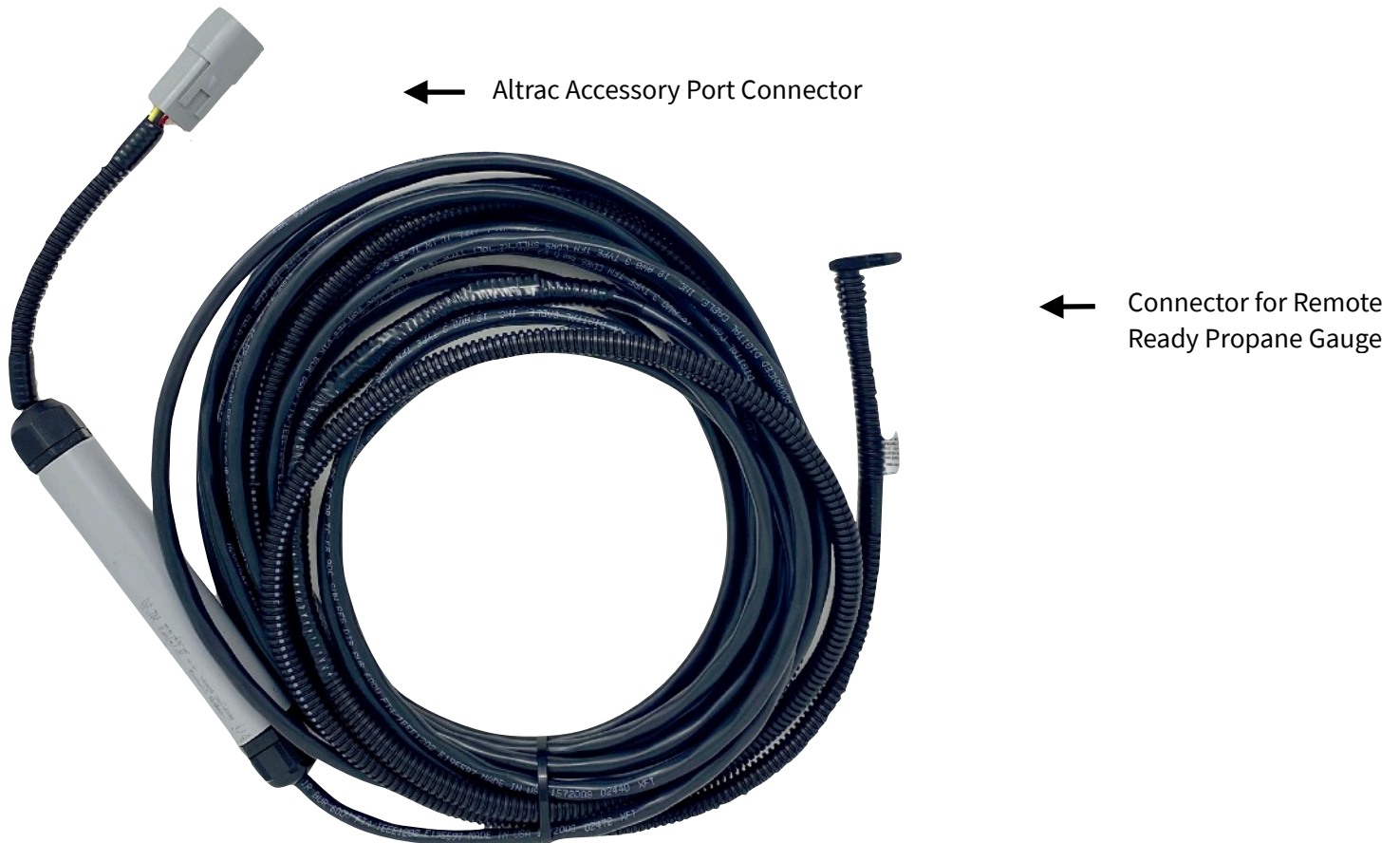
Dial	Dial Shape	Description	Details of fit	Instructions
	Tabbed Jr.	These dials have two plastic tabs at the 12 o'clock and 6 o'clock positions and are held in the gauge cup with two Small # 6 Screws.	Junior (1.5 inch diameter)	Page 9
	Tabbed Sr.		Senior (2 inch diameter)	Page 9
	Drop -In Type A	Drop-in dials fit into a gauge with a small peg that aligns the dial, and are held in by two #4 slotted screws that overlap the edge of the dial.	Type A has the hole for the peg behind the 5% mark.	Page 10
	Drop -In Type B		Type B has the hole for the peg behind the 30% mark.	Page 10

Dial	Dial Shape	Description	Details of fit	Instructions
	<p>Press - In</p>	<p>Press - in dials are not held on by screws or tabs, but are glued into the gauge head.</p>	<p>For Junior dials, any Drop-in Dial can be used as a replacement. For Senior dials, affix an adapter to the gauge, and screw a tabbed senior dial to the adapter.</p>	<p>Page 11</p>

Altrac Propane Fuel Sensor

The SN110 propane fuel sensor allows the Altrac Station (ST100) to monitor tank fill of liquid propane gas tanks. The sensor easily connects to the Altrac Station for wind machines or irrigation pumps. The hall effect sensor is compatible with and requires a Remote Ready Rochester gauges. The float mechanism inside the propane tank magnetically transmits fill state through the solid bulkhead to the dial, which is then picked up by a hall effect sensor.

The sensor can easily retrofit most propane tanks.



WARNING! This sensor is not to be used as the primary means of determining high or low fuel condition. It must not be used in the absence of redundant systems in critical applications where there may be significant safety risk or financial exposure in the event of fuel overfill or fuel exhaustion condition. This sensor is not to be used for tank filling.

Propane Sensor Specifications

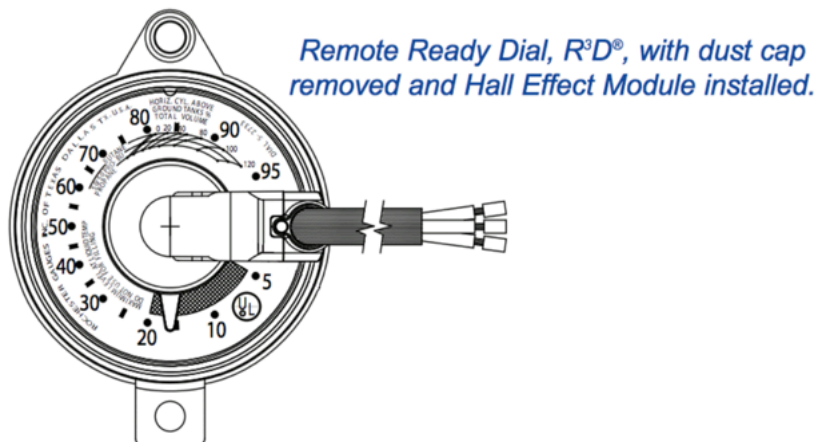
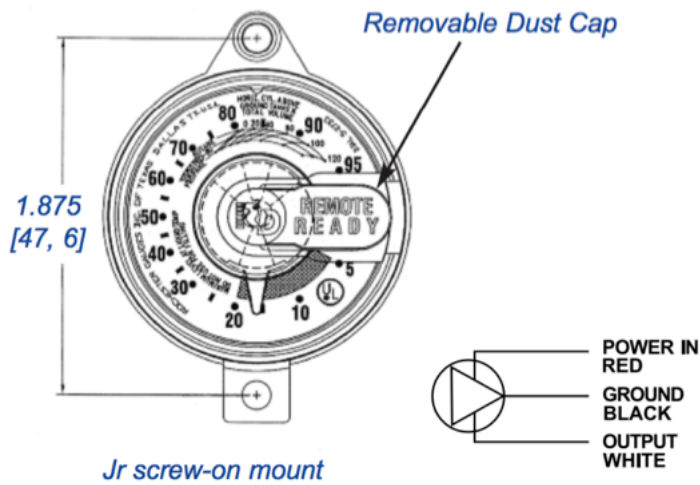
Operating Temperature

- 40°C to 80°C (-40°F to 176°F)






Accuracy

Voltage output $\pm 4\%$ (full scale) of visual dial indication.

Float gauge errors not included

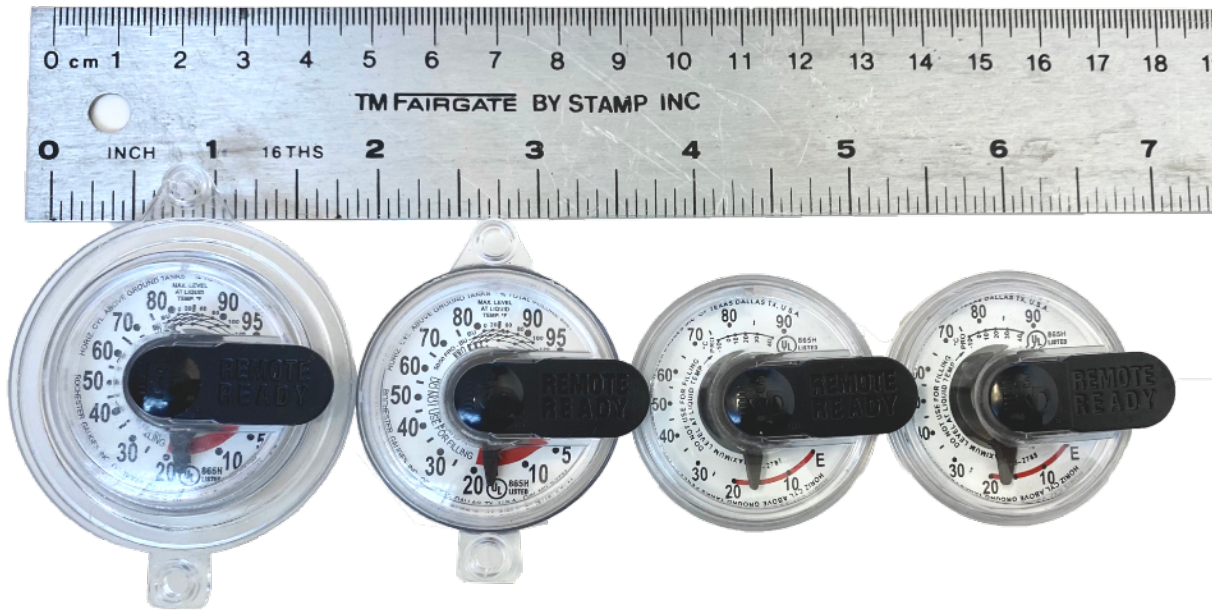


Choosing a Remote Ready Dial

Dial	Dial Shape	Description	Details of fit	Instructions
	Tabbed Jr.	These dials have two plastic tabs at the 12 o'clock and 6 o'clock positions and are held in the gauge cup with two Small # 6 Screws.	Junior (1.5 inch diameter) Altrac sku: SN110_JR Rochester Part #: 5909S02733	Page 9
	Tabbed Sr.		Senior (2 inch diameter) Altrac sku: SN110_SR Rochester Part #: 5986S02733	Page 9
	Drop -In Type A	Drop-in dials fit into a gauge with a small peg that aligns the dial, and are held in by two #4 slotted screws that overlap the edge of the dial.	Type A has the hole for the peg behind the 5% mark. Altrac sku: SN110_RA Rochester Part #: 5987S02787	Page 10
	Drop -In Type B		Type B has the hole for the peg behind the 30% mark. Altrac sku: SN110_RB Rochester Part #: 5988S02788	Page 10
	Press - In	Press - in dials are not held on by screws or tabs, but are glued into the gauge head.	For Junior dials, any Drop-in Dial can be used as a replacement. For Senior dials, affix an adapter to the gauge, and screw a tabbed senior dial to the adapter. Altrac sku: SN110_SR SN110_PI_SR Rochester Part #: 5986S02733 0119-00406	Page 11

When ordering please specify the dial part number.

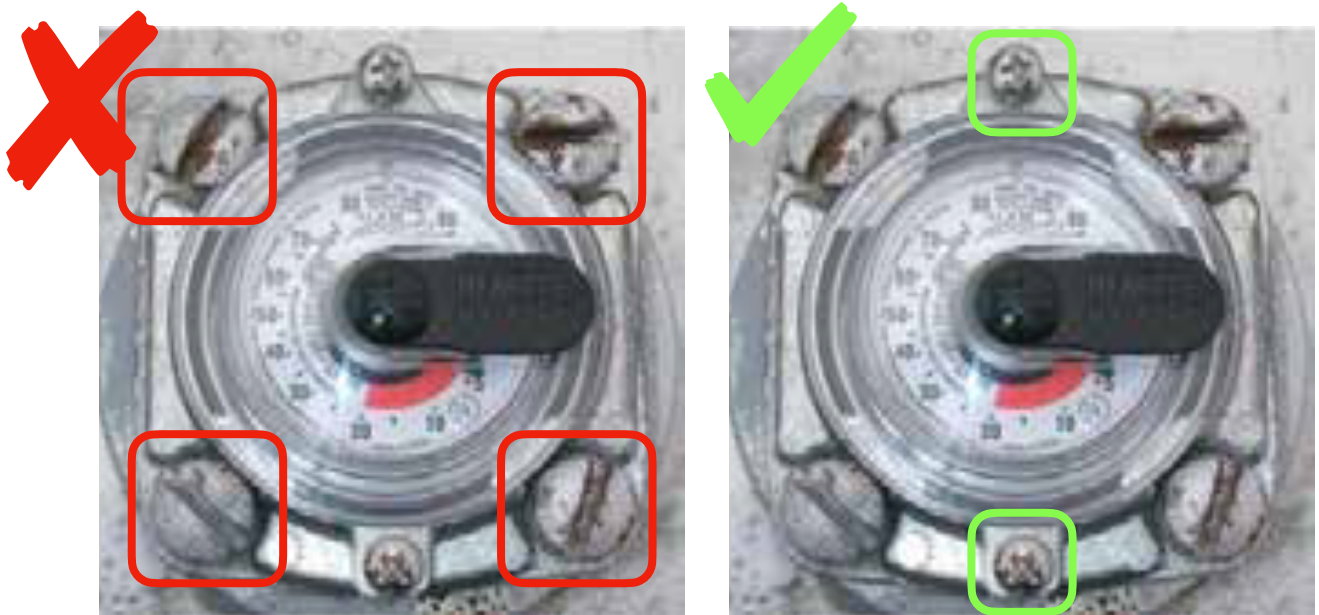
If you are not sure which dial you have please take a photo of your dial next to a measuring tape and send to support@altrac.io



Removing Existing Dial

Step 1: Before removing the original dial, record the percentage full reading to ensure the new dial displays the same reading.

Step 2: When removing the dial DO NOT remove the large bolts securing the floating head to the tank.

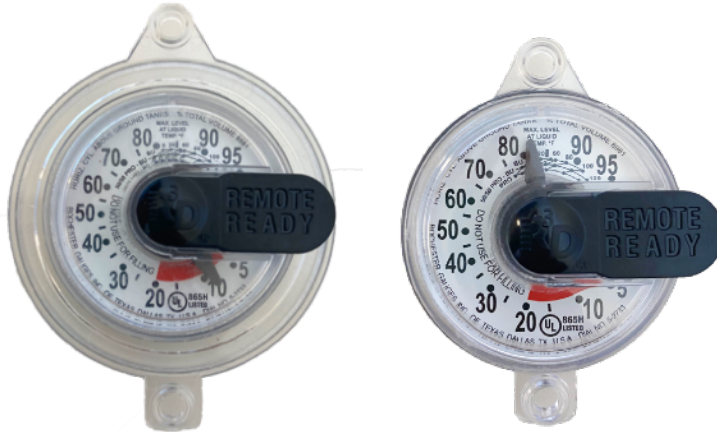


 When removing the dial please use eye protection.

Remote Ready Dial Installation

Tabbed Dial Replacement

When removing tabbed style dials remove the screw positioned at 12 o'clock and 6 o'clock.



Materials needed: Screw driver and eye protection.

1. Record the reading of the original dial.
2. Unscrew the screws in the 12 o'clock and 6 o'clock position.
3. Remove the old dial and clean the gauge cup.
4. Place the new remote ready dial and secure with screws.

Drop - In Dial Replacement



Materials needed: Screw driver and eye protection.

1. Before removing the original dial, record the reading.
2. Remove the old dial and clean the gauge cup.
3. Place the dial in the gauge cup, and rotate until the peg fits into the hole in the back of the dial.
4. Make sure that the replacement dial reads the same as the original dial.
5. Make sure that the slot on the dial is perpendicular to the screws that hold the dial in.
6. Secure the new dial with screws.

Press - In Dial Replacement

Materials needed: silicone adhesive, hammer, eye protection.

1. Record the reading of the original dial.
 2. Break out the plastic of the dial with a hammer.
 3. Remove the pointer, bushing, and pin.
 4. Affix the replacement dial, making sure the reading matches the original dial
- For a Junior dial, use a silicone adhesive to affix replacement dial
 - For a Senior dial, use a silicone adhesive to attach a senior 4-bolt adapter



Junior: Use a silicone adhesive to affix a junior drop-in dial. Make sure to position the dial so that it displays the same reading as the original dial.

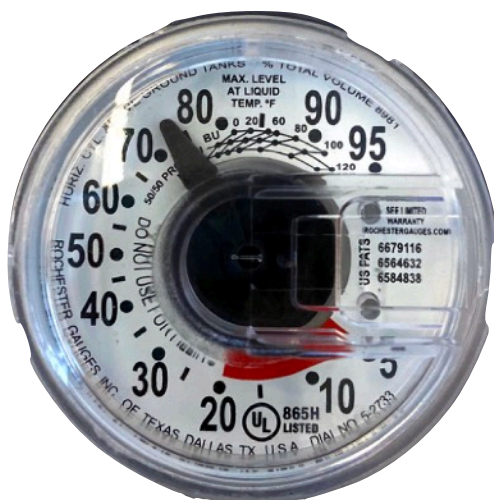


Senior: Use a silicone adhesive to affix a senior adapter with a tabbed dial so that it displays the same reading as the original dial.

Propane Sensor Installation

The SN110 is an optional Sensor for Altrac's Wind Machine Station. Installation takes approximately 10 minutes and can be accomplished with a Phillips screwdriver.

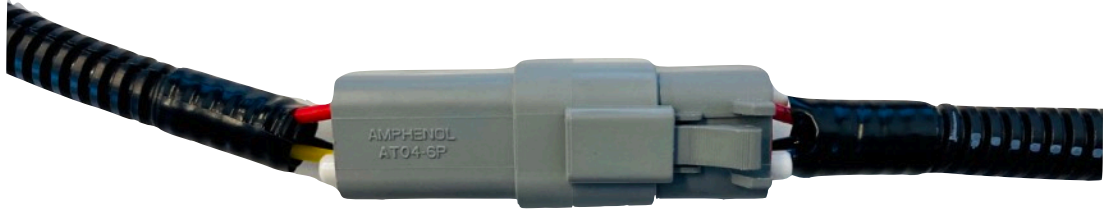
1. Replace current LPG tank dial with a remote ready dial. The dial is located on top of the propane tank under the protective hood. Further information on dial identification and replacement is listed above.
2. Remove the remote ready tab from the dial.



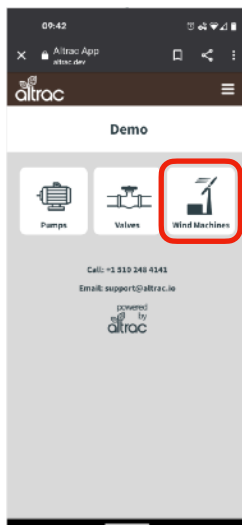
3. Insert the hall effect sensor cable into the remote ready dial.



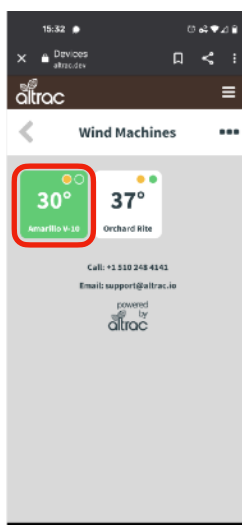
4. Plug the 6-pin connector of the Propane Sensor to the Altrac Station.



5. Log in to your Altrac account (www.altrac.io).



6. Find the Altrac Station connected to the sensor.



- Go to the setting page within the device page.



- Calibrate your fuel sensor. Choose 'Liquid Propane Gas (SN110)'.

