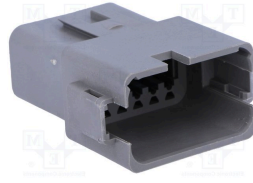
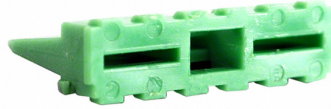


Components

Connector Socket
AT04-12PA



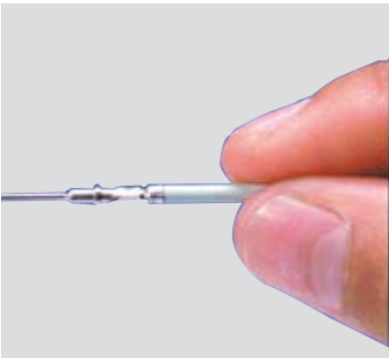
Connector Socket Wedge
AW12P



Male Pin (Crimped on wire)
Contact Size 16
AT60-202-16141



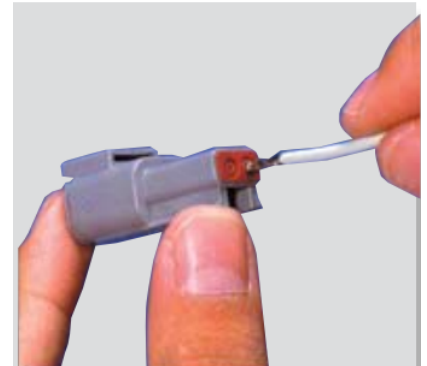
Process



1. Grasp contact approximately 1.0” behind contact barrel.

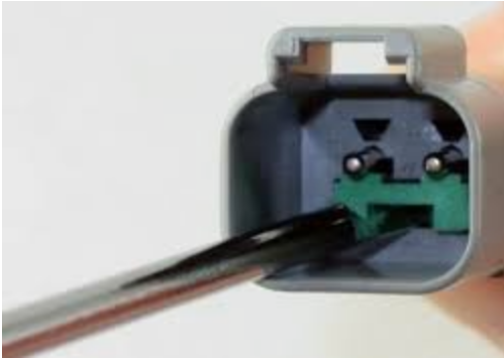


2. Hold connector with rear grommet facing you.



3. Push contact straight into connector grommet until a click is felt. A slight tug will confirm that it is locked in place.

Process



4. Once all contacts are in place, insert wedge. The wedge will snap into place.

Tools

Retention Tester
HT250-5



Socket Tester
Contact Size 16
67-016-01

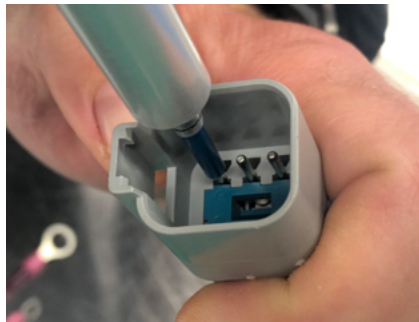


Pin Tester
Contact Size 16
68-016-01



Process

1. Insert tester into mating end of contact. Tool must be in a straight line with contact.



2. Apply pressure toward contact until slide aligns with indicator line. Contact should remain in place.

